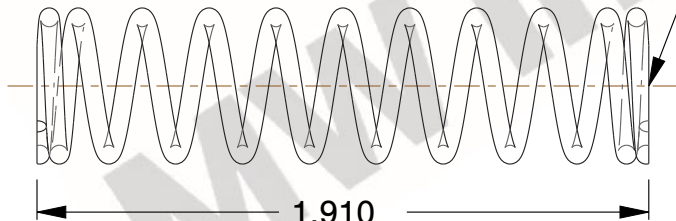


NOTES:

1. Material : Music Wire
2. Finish : Glod Irridite
3. Ends : Closed and Ground
4. Total Coils : 11.300
5. Sugg. Max. Deflection : 0.480 (in)
6. Sugg. Max. Load : 5.600 (lbs)
7. All Drawing Dimensions are in Inches [mm]

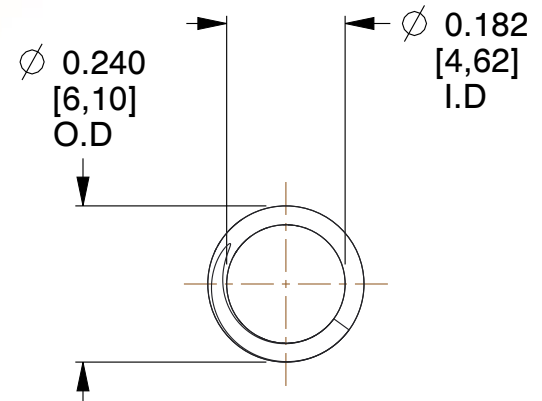


∅ 0.029
[0,74]
WIRE DIA



GROUND
SURFACE

1.910
[48,51]
LENGTH



∅ 0.240
[6,10]
O.D

∅ 0.182
[4,62]
I.D

COMPONENT		SPRINGS	
70652		UNIT	
		INCH [mm]	
		SHEET	
COMPRESSION SPRINGS		1 of 1	